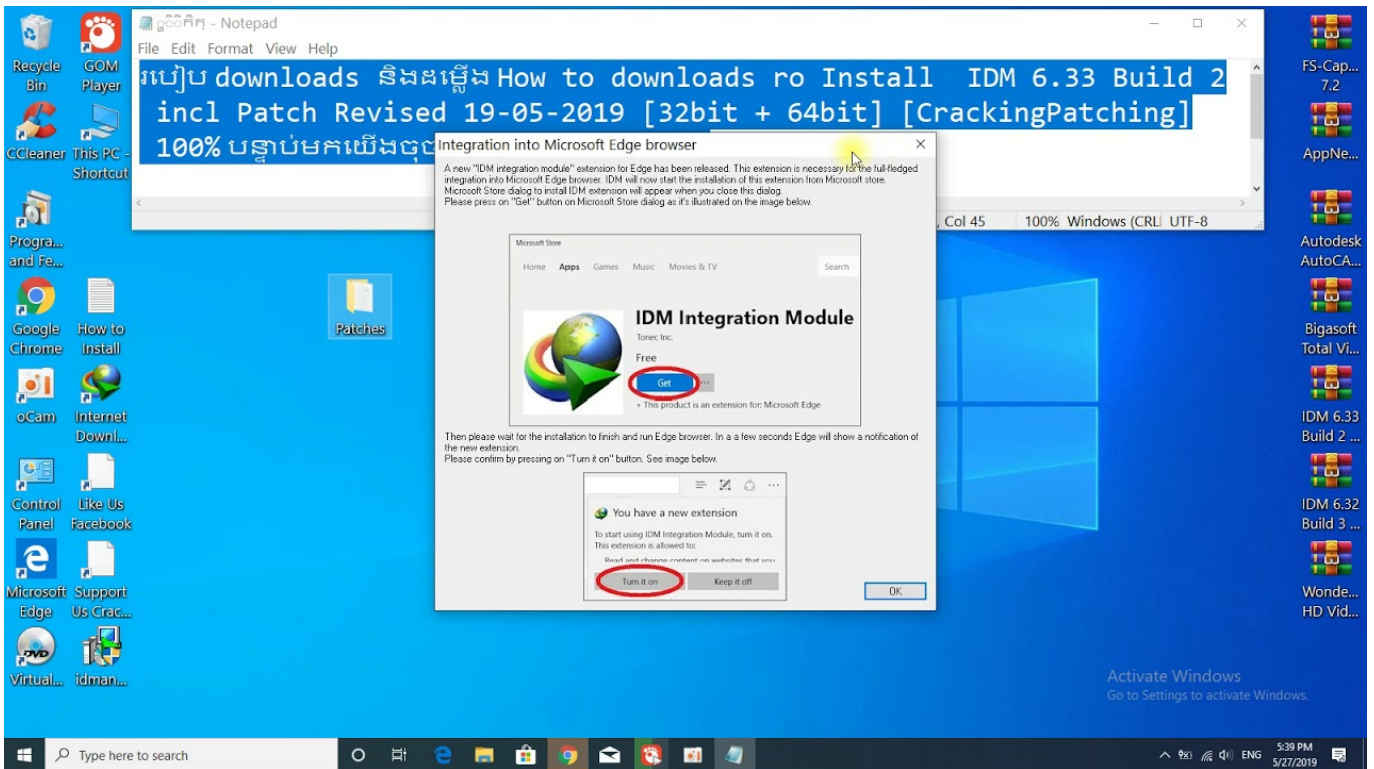




[Enter Password For The Encrypted File Setup Fabrication ESTmep 2010](#)



[Enter Password For The Encrypted File Setup Fabrication ESTmep 2010](#)

Download



You can access (launch) the Configure Users application in the ... the folder where the Autodesk Fabrication product (CADmep, ESTmep, or CAMduct) is installed. This is typically C:\Program Files\Autodesk\Fabrication \